

Premier Sliding Patio Doors

LUXURY PERFORMANCE



REPLACEMENT

ASSEMBLY & INSTALLATION INSTRUCTIONS

Table of Contents

	<u>Page Number</u>
Knock Down Premier Patio Door Parts List	2
Preparing the Opening	3
Assembling the Mainframe	3
Installing the Mainframe into the Rough Opening	3
Installing the Fixed Panel	5
Installing the Active Panel	7
Attaching the Handle to the Active Panel	8
Two Panel Instructions	8
Three Panel Instructions	10
Four Panel Instructions	14

Knock Down Premier Patio Door Parts List

	<u>2-Panel</u>	<u>3-Panel</u>	<u>4-Panel</u>
1 Patio Door Mainframe - (1) Head, (1) Sill, (2) Jambs	All	All	All
2 Operating Sash Panel	1	1	1
3 Fixed Sash Panel(s)	1	2	2
4 Passive Sash Panel			1
5 Astragal with Keepers		1	
6 Mullion with Keepers			1
7 Interior Interlock(s) & Exterior Interlock(s)	1	1	2
8 Fixed Panel Setting Block(s)	1	2	2
9 Jamb Frame Covers	2	2	2
10 Head Frame Cover	1	2	1
11 Interior Astragal Frame Cover		1	
12 Exterior Astragal Frame Cover		1	
13 Screen(s)	1	1	2
14 Screen Mullion			1
15 Active Handle Box	1	1	1
16 Passive Handle Box			1
17 Plastic Bag Containing	1	1	1
a 2 Panel Installation Screw Pack with Plugs	1		
b 3 Panel Installation Screw Pack with Plugs		1	
c 4 Panel Installation Screw Pack with Plugs			1
d Door Assembly Screw Pack	1	1	1
e Silicone Tube(s) with Tip(s)	1	2	2
f Fixed Panel Bracket(s)	1	2	2
g Security Screws (#8 x 1 1/2" PH Flat)	2	4	4
h Siegenia Portal Bag			1
18 <i>Optional Foot Bolt Bag(s)</i>	1	1	2
19 <i>Optional Blind Control Cords</i>	2	3	4

A. PREPARING THE OPENING

- 1) Remove dirt and debris from the rough opening.
- 2) Check the opening perimeter for any loose or rotted board or any defect that could affect the square-ness and proper fit of your new patio door. It may be necessary to repair the rough opening, specifically the sill with a treated board to achieve a good flat surface.
- 3) Check rough opening width and height to insure that door will fit into the opening with some clearance for the shims. 1/4" gap on each side and 1/2" clearance at the top is desirable. Insure that the sill (floor) is level.

B. ASSEMBLING THE MAINFRAME

- 1) Attach the Jamb to the Head & Sill using (16) #8 x 2" PH screws. Drive the screws through the pre-punched clearance holes in the jambs, through the head and sill end gaskets and into the bosses of the head and sill.



C. INSTALLING THE FRAME INTO THE ROUGH OPENING



- 1) From the outside looking in seal the sub-sill by placing two 1/8" continuous parallel beads of silicone along the entire length of the floor where the frame will make contact (1st bead at 1" and 2nd bead at 2 1/2"). It is important that no gaps are allowed and both beads extend from one edge to the other to insure that water will not penetrate this line



2) Center the door frame in the rough opening between its framing. This allows the frame to be squared and shimmed and also allows vinyl expansion and contraction with the seasons.



3) Plumb, level, and square frame in rough opening (side to side, front to back and diagonal). Temporarily shim jambs at the extreme corners to keep the frame centered and square. When placing shims, put one inside & one outside to keep the frame from rolling after installation.



4) Shim jambs and head above each installation hole and head; make sure side jambs do not bow or twist in from the shims. Shims must be placed at the lock jamb behind all locking points. Do not use any shims under sill. The bottom of the frame should set directly on the rough opening floor.



5) Remove Keeper and Infill cover from operating jamb by removing the two short screws from the keeper. Keep them together because you will be placing this back on later.



6) Check that frame remains plumb, level, and square using a level and square. Drive #10 x 2 1/2" PH screws into each installation hole, (8) total. 1/2" Screw-hole caps are provided for use when necessary.

7) If needed to keep frame square, use extra #10 x 2 1/2" PH screws to screw head into opening. Screw into the fixed panel pocket spacing them evenly, *Note: There are no installation holes pre-drilled in the head.*

D. INSTALLING THE FIXED PANEL

1) Unwrap fixed panels and remove all tape.



2) Place a back bead of silicone in the exterior sash pocket of the fixed jamb. This silicone should be placed around the sill joint and to a height equal to the fixed panel setting block that will be installed in the next step.



3) Insert the notched end of the setting block into the exterior sash pocket of the fixed jamb. The grooves on the bottom of the setting block will fit snugly over the two treads running the full length of the sill. Hold the setting block firmly against the sill so the flex on the setting block presses against the step on the sill. Use (4) #10 x 1 3/4" self-drilling 5/16" hex head screws to fasten through the top groove on the setting block down into the sill. Make sure the setting block is seated fully by checking for gaps between it and the sill.



4) Place a continuous bead of silicone following the perimeter of the jamb from the top of the setting block, around the dividing wall and around the roller track tower until the entire perimeter is sealed.

5) Place a 2" long bead of silicone in each of the two grooves in the jamb pocket at the roller track tower. Make sure both grooves are sealed at the sill.

6) Run a bead of silicone along the entire length of the setting block so that the exterior leg of the sash will be sealed when resting on the setting block.



7) Insert the stationary panel, with glazing beads towards the inside of the house & bulb seal end at the bottom, into the frame by lifting it up into the head pocket and then setting it down over the fixed panel setting block. This can be accomplished from either side of the door.



8) Slide the panel along the setting block into the jamb pocket. Check to make sure the panel is installed all the way back into the jamb pocket. Use a rubber mallet to tap the panel in place and align with the end of the setting block.



9) Install (2) #8 x 1 1/2" Flat Head interior security screws through the predrilled holes in the jamb divider into the fixed panel sash stile.



10) Use the (3) #8 x 1/2" PH screws to attach the fixed panel bracket at the head & Panel.



11) Place silicone on the entire end of the setting block.



12) Snap in the fixed panel interlock (use a rubber mallet if necessary). The interlock must be flush to the bottom of the panel. Start at the bottom and gently tap working your way up the interlock. If necessary, trim bulb seal even with bottom of panel on the interlock.



13) While standing on the interior of the door, locate a vertical groove next to the interior weather strip on the interlock. Use (5) #8 x 1" PH self drilling screws to fasten through the interlock into the face of the panel. Start by placing one even with the glazing bead both top and bottom. Then place one in the middle of the panel. Finish with two more evenly spaced between the three screws. **3-Panel Doors: Repeat steps 1-9 of "INSTALLING THE FIXED PANEL" for the second fixed panel or astragal panel.**

Note: The setting block for the astragal panel has two notches in it. The smaller notch fits into the jamb pocket. Also there will not be a fixed panel bracket or interlock for the astragal panel.



4-Panel Doors: Repeat steps 1-13 of "INSTALLING THE FIXED PANEL" for the second fixed panel.

E. INSTALLING THE ACTIVE PANEL

1) Unwrap active panel and remove all tape.



2) While the panel is out, snap in the operating panel interlock (use a rubber mallet if necessary). The interlock must be flush to the bottom of the panel. Start at the bottom and gently tap working your way up the interlock.



3) With the exterior of the panel facing you, locate a vertical groove next to the interior weather strip on the interlock. Use (5) #8 x 1" PH self drilling screws to fasten through the interlock into the face of the panel. Evenly space the screws down the full length of the interlock, use the same locations as the fixed panel interlock.



4) Insert the active panel into the frame with glazing beads towards the inside of the house, by grasping both sides of door panel. Insert top edge into interior frame pocket with the midsection lining up with end of fixed panel and rotate bottom edge over the roller track.



5) Slide panel open and closed to insure ease of operation. If active panel does not slide freely, it may be necessary to re-adjust the roller height. Take the weight off the panels for adjusting the rollers using a shim. To extend the rollers turn clockwise and to retract the rollers, turn counter clockwise.

6) When the panel is completely engaged in the jamb pocket, check alignment of the interlocks for a good seal.



7) The roller holes can be covered with caps provided.

F. ATTACHING THE HANDLE TO THE ACTIVE PANEL

1) Take handle out of the package sent with the door.

2) Follow the installation instructions given with the handle set.

FOLLOW THE TWO PANEL, THREE PANEL, OR FOUR PANEL INSTRUCTIONS FROM THIS POINT.

TWO PANEL INSTRUCTIONS

G. ADJUSTING THE KEEPERS

1) The keeper(s) are installed at the factory with only short screws. Place infill cover and keeper back into place with the two short screws that were used to hold the keeper on. Test the keeper locations by operating the lock. Make sure the active panel is fully engaged while testing the keeper position(s). If needed you can move individual keepers.



2) Once the keeper(s) are in position, replace the short factory installed screws with (8) #10 x 3" Flat Head screws. These long screws will insure that the keepers stay in place.

3) Verify both panels will lock together.

H. INSTALLING FRAME COVERS



1) Take Head Cover and snap it into the outer cavity on the head (A rubber mallet might be needed). Head Cover will have two 90° ends.



2) Take Jamb Covers and snap one into the inner cavity on the jamb & one into the outer cavity on opposite jamb (A rubber mallet might be needed).

I. INSTALLING SCREEN



1) Insert the screen into the screen channel top end of the screen into the head first. Use a putty knife to push up the bottom rollers when inserting the bottom of the screen into the door.



2) Align up the keeper to the lock and mark the keeper on the jamb for keeper location.



3) Screw in the keeper on the jamb (use marks that you made to align with lock) use two screws that were attached to the keeper with the screens.

4) Verify screen will lock.

J. FINISHING TOUCHES



1) Place a bead of silicone at the operating jamb/sill corner along its perimeter.



2) Cut any shims used flush with the wall.



3) Loosely fill remaining gaps at head and jambs with batt type insulation. Do not use expandable foam which may cause frame members to bow.

4) Trim Exterior and Interior of door as desired.

Note: There will be extra screws & caps in the screw packs due to differences between Two Panel, Three Panel and Four Panel Patio Doors.

THREE PANEL INSTRUCTIONS

G. ATTACHING THE ASTRAGAL TO THE FIXED PANEL

1) Locate (2) 1" x 1" angle brackets in the 3-Panel Door Screw Pack.



2) Place the Astragal into the frame by first aligning its fabrication at the bottom with the sill. Push the sill end directly against the bottom of the astragal. Do the same with the head end of the astragal.



3) Once the Astragal is pushed up against the fixed panel we want to mark the locations for the angle brackets. First place one angle bracket under the sill end of the Astragal where there is a notch in the sill. Mark this location. Second place one angle bracket over the head end of the Astragal in the interior pocket of the head. Mark this location. Note: Both angle brackets will be half covered by astragal when we place astragal on again.



4) Remove the Astragal and screw in the (2) 1" x 1" angle brackets by using the marked locations into the head and sill. Use (2) #8 x 1" Flat Head self drilling screws to attach the bracket at the head and sill. The bracket at the sill will be centered at the notched out roller track. The bracket location at the head will be marked 2/3 down the length of the interior sash pocket. Orient the brackets so that the astragal, once put into place, will cover up the screws you just put into the head and sill.



5) Place silicone on the entire end of the setting block.

6) Place a bead of silicone on the sill at the end of the setting block running from the screen roller track back to the 1st step, up the step and then 2" length on that same step running parallel with the cutout notch of the roller track.



7) Install the astragal by first aligning its fabrication at the bottom with the sill. The sill's contour matches this fabrication. Push the sill end directly against the bottom of the astragal panel.

8) Swing the top of the astragal towards the head until the contoured fabrication aligns.

9) Use a rubber mallet to fasten the astragal to the astragal panel end.



10) Use (5) #8 x 2" PH screws to fasten the astragal to the astragal panel end follow the groove and evenly space the screws.



11) Use (2) #8 x 1" self drilling screws to fasten the 1" x 1" angle brackets at the head and sill to the astragal.

12) Place a bead of silicone at the astragal/sill inside the pocket containing the 1" x 1" angle bracket.

H. ADJUSTING THE KEEPERS



1) The keeper(s) are installed at the factory. Test the keeper locations by operating the lock. Make sure the active panel is fully engaged while testing the keeper position(s). If needed you can move the keeper by backing out screws and repositioning keeper.

2) Verify both panels will lock together.

I. INSTALLING FRAME COVERS



1) Take Jamb Covers and snap into the inner cavity on the jambs (A rubber mallet might be needed). Jamb covers will have one end with a notch in the middle (this end goes towards the sill) and one end with sides notched (this end goes into the head cavity).



2) Take Exterior Astragal Frame Cover and snap into the outer cavity on the Astragal (A rubber mallet might be needed). The Exterior Astragal Frame Cover will have one end with a 3° angle cut (this end goes towards the sill) and one end with the sides notched (this end goes into the head cavity).



3) Take Interior Astragal Frame Cover and snap into the inner cavity on the Astragal (A rubber mallet might be needed). The Interior Astragal Frame Cover will have one end with a notch in the middle (this end goes towards the sill) and one end with sides notched (this end goes into the head cavity).



4) Take Head Cover and snap one into the outer cavity on the head & one into inner cavity on the head next to the astragal. (A rubber mallet might be needed). Head Covers will have two 90° ends.

J. INSTALLING SCREEN



1) Insert the screen into the screen channel top end of the screen into the head first. Use a putty knife to push up the bottom rollers when inserting the bottom of the screen into the door.



2) Align up the keeper to the lock and mark the keeper on the jamb for keeper location.



3) Screw in the keeper on the astragal (use marks that you made to align with lock) use two screws that were attached to the keeper with the screens.

4) Verify screen will lock.

K. FINISHING TOUCHES



1) Place a bead of silicone at the operating jamb/sill corner along its perimeter.



2) Cut any shims used flush with the wall.

3) Loosely fill remaining gaps at head and jambs with batt type insulation. Do not use expandable foam which may cause frame members to bow.

4) Trim Exterior and Interior of door as desired.

Note: There will be extra screws & caps in the screw packs due to differences between Two Panel, Three Panel and Four Panel Patio Doors.

FOUR PANEL INSTRUCTIONS

G. INSTALLING THE PASSIVE PANEL

1) Unwrap passive panel and remove all tape.



2) While the panel is out, snap in the operating panel interlock (use a rubber mallet if necessary). The interlock must be flush to the bottom of the panel. Start at the bottom and gently tap working your way up the interlock.



3) With the exterior of the panel facing you, locate a vertical groove next to the interior weather strip on the interlock. Use (5) #8 x 1" PH self drilling screws to fasten through the interlock into the face of the panel. Evenly space the screws down the full length of the interlock.



4) Insert the passive panel into the frame with glazing beads towards the inside of the house, by grasping both sides of door panel. Insert top edge into interior frame pocket with the midsection lining up with end of fixed panel and rotate bottom edge over the roller track.



5) Slide panel open and closed to insure ease of operation. If active panel does not slide freely, it may be necessary to re-adjust the roller height.



6) When the panel is completely engaged in the jamb pocket, check alignment of the interlocks for a good seal.

7) The roller holes can be covered with caps provided.

H. ATTACHING THE MULLION ON THE PASSIVE PANEL

1) Locate the “H” shaped mullion



2) Slip the mullion onto the passive panel making sure the curved side is on the interior or same side as the glazing beads. The end with the middle notch should be towards the sill.



3) Align the bottom of the mullion with the bottom of the passive panel. Make sure the panel will be able to operate freely without the mullion rubbing at the head or sill.

I. ATTACHING THE HANDLE TO THE PASSIVE PANEL

1) Take handle out of the package sent with the door.

2) Follow the installation instructions given with the handle set.

J. INSTALLING THE PANEL STOP



1) Drill a pilot hole into the sill at the dimpled location with a 1/8” drill bit.



2) Place panel stop onto the sill with the two wedge shaped legs pointing to the center of the sill.

3) Screw on the panel stop with the button head screw that came in the same package as the panel stop.

4) Ensure it is in the correct location by closing the passive panel and locking.

K. ADJUSTING THE KEEPER

1) The keeper(s) are installed at the factory with only short screws. Test the keeper locations by operating the lock. Make sure the active panel is fully engaged while testing the keeper position(s). If needed you can move the mullion up or down to help adjust keepers or move individual keepers.



2) Once the keeper(s) are in position, replace the short factory installed screws with the (8) #10 x 3" screws from the installation screw pack. These long screws will insure that the keepers stay in place.

3) Verify both panels will lock together. **NOTE:** You must first close the passive panel first then close the operating panel. If you do not do this the door may not lock properly

L. INSTALLING FRAME COVERS



1) Take Jamb Covers and snap into the inner cavity on the jambs (A rubber mallet might be needed). Jamb covers will have one end with a notch in the middle (this end goes towards the sill) and one end with sides notched (this end goes into the head cavity).



2) Take Head Cover and snap it into the outer cavity on the head (A rubber mallet might be needed). Head Cover will have two 90° ends.

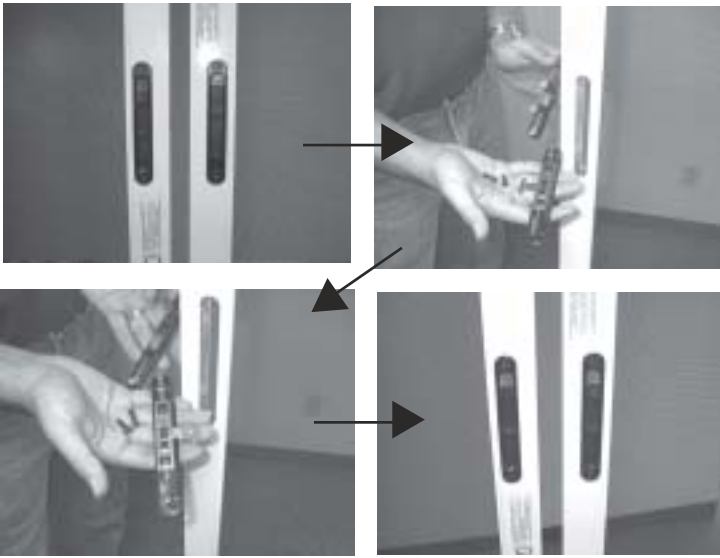
M. INSTALLING SCREENS



1) Insert the lock screen into the screen channel on the active side of the door (on the right from the outside) Insert the screen into the screen channel top end of the screen into the head first. Use a putty knife to push up the bottom rollers when inserting the bottom of the screen into the door.



2) Insert the keeper screen into the screen channel on the passive side of the door (on the left from the outside). Insert the screen into the screen channel top end of the screen into the head first. Use a putty knife to push up the bottom rollers when inserting the bottom of the screen into the door.



3) The keeper screen lock mechanism can be reversed to allow both screens to be mirror images by simply removing two screws on the screen lock and reversing the mechanism inside.



4) Snap on the screen mullion onto the keeper screen; take care in centering the mullion.

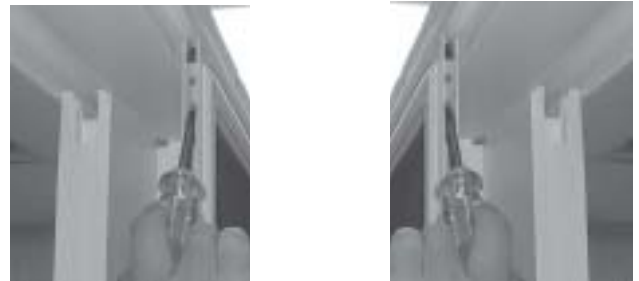


5) Align up the keeper to the lock and mark the keeper screen for keeper location.



6) Screw in the keeper on the screen mullion on the keeper screen, (use marks that you made to align with lock) use two screws that were attached to the keeper with the screens.

7) Verify screens will lock together.



8) If needed extend the top rollers to enable the screens to be stopped at the center of the head.

N. FINISHING TOUCHES

1) Cut any shims used flush with the wall.



2) Loosely fill remaining gaps at head and jambs with batt type insulation. Do not use expandable foam which may cause frame members to bow.


3) Trim Exterior and Interior of door as desired.

Note: There will be extra screws & caps in the screw packs due to differences between Two Panel, Three Panel and Four Panel Patio Doors.



SIMONTON[®]
WINDOWS & DOORS

Proudly part of Cornerstone Building Brands,
the #1 manufacturer of windows in North America.

 Made in USA

SIMONTON.COM



5020 Weston Parkway, Cary, NC 27513 | 1-800-SIMONTON (1-800-746-6686)

IMPRESSIVE INSIDE & OUT