

# 5500 Bay/Bow Collection

PREMIUM VINYL WINDOWS



INSPIRATION GUIDE



Impressive Inside & Out™



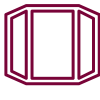
**5-LITE BOW WINDOW**  
White picture windows  
with white interior finish

# Expand Your View. Elevate Your Space.

Designed with an attention to detail, Simonton 5500 Bay and Bow windows add a touch of elegance to any room. 5500 Bay and Bow windows flood your home with natural light and create an eye-catching focal point. They are designed to enhance both the beauty and functionality of your home, adding dimension, charm and expansive views of the outdoors. With attractive finishes and design options, these are more than windows; they are an extension of your home's style.



**IMPACTFUL STYLE**  
Brighten and beautify your home—inside and out. Explore a wide range of colors, configurations and finishes to complement any architectural or interior design style.



**CUSTOM MADE**  
The 5500 Bay & Bow Collection is built to the exact size and specifications of your home to ensure proper installation and performance.



**EXCEPTIONAL QUALITY**  
5500 Bay & Bow windows are built with high-quality mullions and feature durable, threaded steel rods that provide long-lasting, weather-tight performance.



**LIFETIME LIMITED WARRANTY**  
We stand behind the quality and craftsmanship of our windows and proudly offer a comprehensive warranty covering our vinyl, hardware and glass units to ensure your total peace of mind.



**ENHANCED ENERGY EFFICIENCY**  
Customize your energy-efficient 5500 Bay & Bow windows with advanced glass options including triple pane glass for superior thermal performance and interior comfort.



**TRUSTED EXPERTISE**  
Simonton is proud to be part of Cornerstone Building Brands, the #1 manufacturer of windows in North America. We continue to deliver on a reputation of innovation and authenticity built over 75 years in the industry.



**AAMA GOLD LABEL CERTIFIED**  
The 5500 Collection has earned the AAMA Gold Label, signifying best-in-class durability, weather resistance and energy efficiency. Learn more at [simonton.com/aama-gold](https://simonton.com/aama-gold)



**ENERGY STAR® CERTIFIED**  
Simonton offers region-specific glass packages that meet ENERGY STAR criteria for optimal energy efficiency and comfort in any climate.



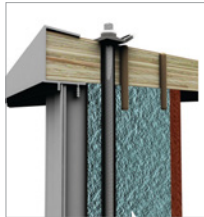
Scan the QR code to watch the Simonton brand video.



# D1 Your home's transformation begins here

The 5500 Bay and Bow windows are meticulously designed for optimal performance and aesthetic appeal, enhancing both the interior and exterior of your home. Durable weather-resistant features and a superior structural design ensure years of exceptional performance.

## Craftsmanship, Beauty & Performance



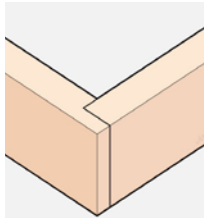
### 1. SUPERIOR CONSTRUCTION

5500 Bay & Bow windows feature insulated wood mullions and high tensile strength threaded steel rods for strength, insulation and condensation resistance.



### 2. ROOFING SYSTEM

Optional factory-assembled and precision-built plywood roofs are available with a standard pitch. They are completely assembled, ready for installation, and built to the exact specifications of the unit.



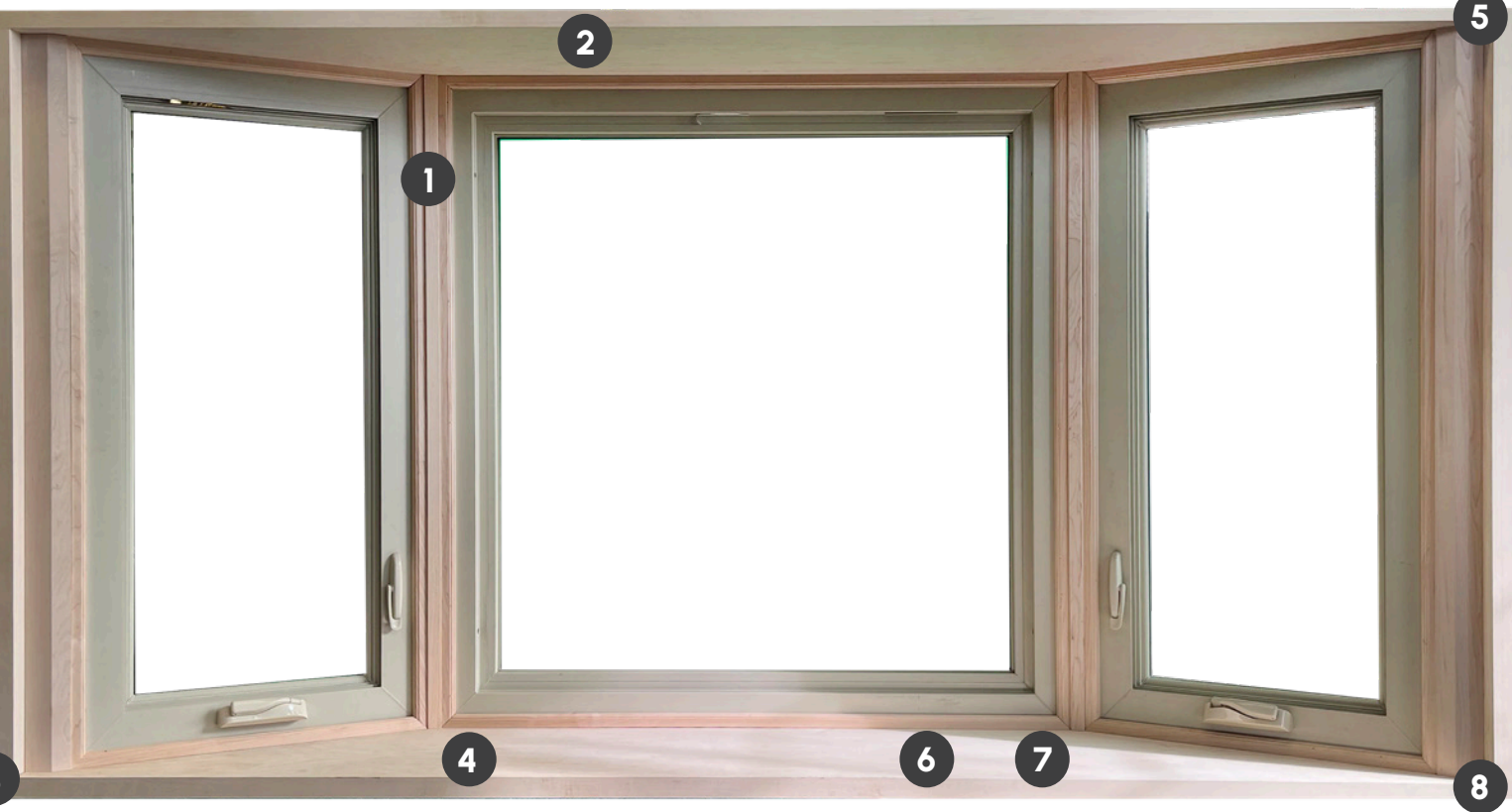
### 3. BUILT TO LAST

Rabbeted corner assembly of the bay and bow frame resists shear forces and helps maintain the squareness of the unit, providing better long-term performance compared to butt joint corners.



### 4. DIMENSIONAL BEAUTY

An expansive window seat provides a place to decorate or add pillows for additional seating. On the exterior, bay and bow windows add unique architectural dimension to a home.



Achieve a finished appearance with optional decorative edge banding and colonial casing in 2-1/4", 3-1/2" and 5" sizes, in either Red Oak or White Birch.

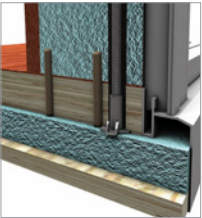


Optional knee braces for added support or decoration can be ordered primed or painted to match the bay or bow window.



### 5. WATER MANAGEMENT

Recessed mullions and beveled exterior casing for improved water management and fast, easy window installation.



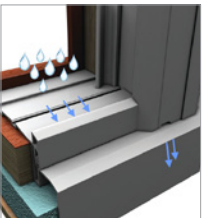
### 6. THERMAL PERFORMANCE

The insulated seatboard helps keep your home more comfortable while lowering energy costs.



### 7. CUSTOMIZABLE INTERIOR

Constructed using furniture grade 1-1/4" hardwood plywood, with Red Oak or White Birch veneers available.



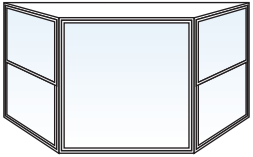
### 8. WEATHERPROOF

An integrated, weeped sill pan helps protect against water infiltration.

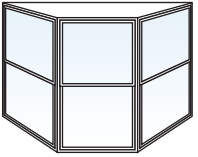
## The Difference Between Bay Windows and Bow Windows.

### BAY WINDOWS

Come in 30° or 45° angles, adding depth and a dramatic touch to any room. Bay windows are available with a large, center picture window or with equal size windows.



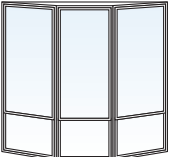
30°



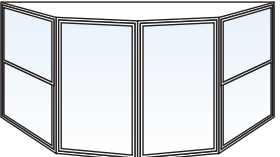
45°

### BOW WINDOWS

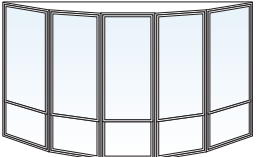
Available in a 3-, 4-, or 5-lite design, always have a 10-degree angle, which creates a more rounded, circular look.



3-lite



4-lite



5-lite

Bay and Bow windows can be shipped with pre-installed windows for quick installation or without window installed with the chassis, allowing for on-site customization and easier handling during transport.

# D2

## Select Your Design Options

Bring your vision to life with a variety of color, hardware and grille options that will complement the interior and exterior aesthetic of your homes.

### Colors

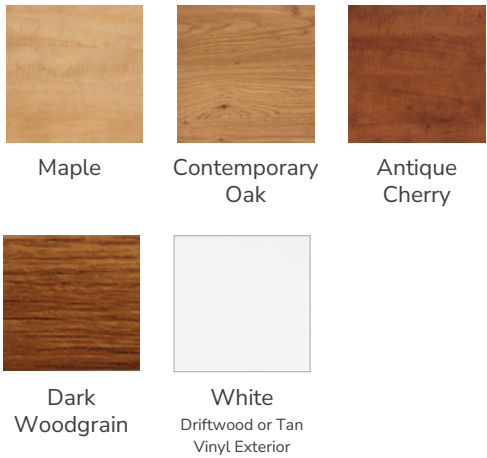
#### VINYL INTERIOR & EXTERIOR COLORS

Virtually maintenance-free beauty and durability with the color molded throughout the vinyl profile.



#### LAMINATE INTERIOR COLORS (Coming Soon)

Transform your home with the warmth of a durable woodgrain laminate. Exterior available in white or tan vinyl or a custom color, except as noted.



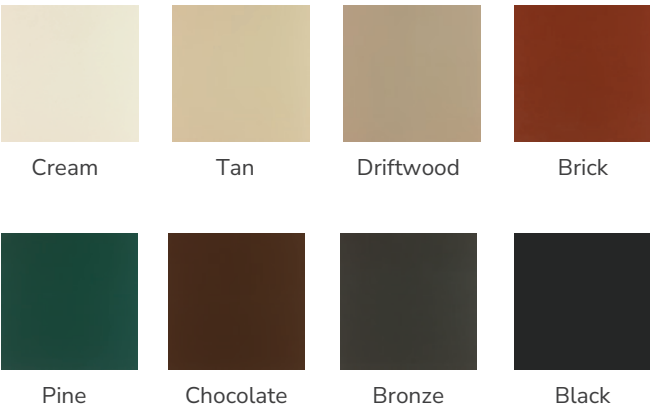
#### PRE-FINISHED INTERIOR FINISHES

Painted for stained interior finish to coordinated with the vinyl window color or woodgrain laminate.



#### CUSTOM EXTERIOR COLORS

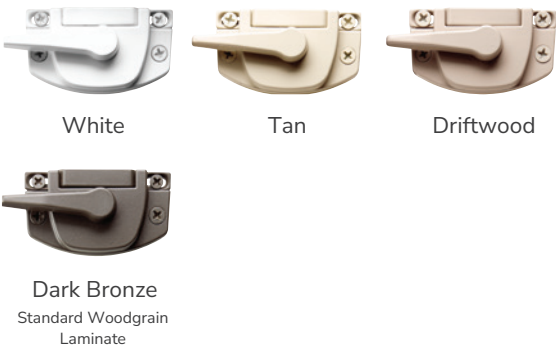
Add curb appeal with a heat-reflective color coating that resists fading and heat build-up. Interior available in white or tan vinyl or a woodgrain laminate.



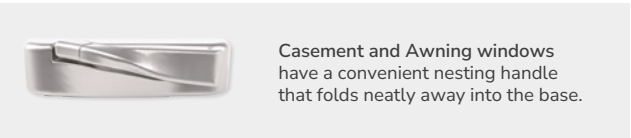
### Hardware

Double Hung window cam locks pull your window frame and sash together for increased security and weather resistance.

#### COLOR-MATCHED CAM LOCK FINISHES

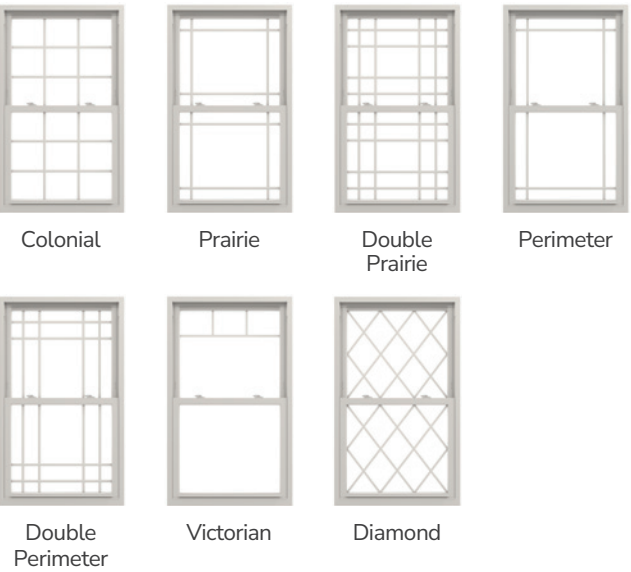


#### PREMIUM CAM LOCK FINISHES



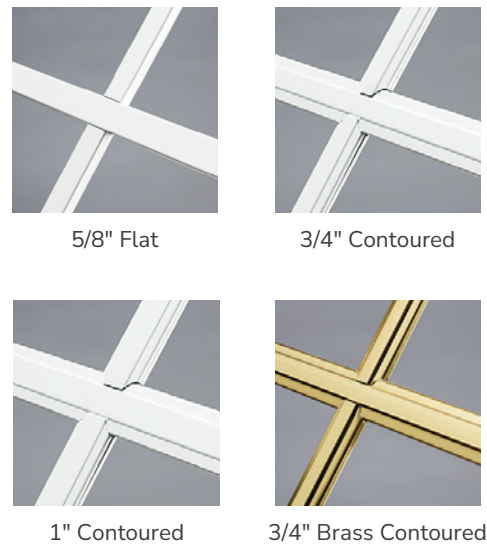
### Grille Patterns

From traditional to contemporary to craftsman home styles, we provide architecturally authentic selections to match any aesthetic. Grille patterns can also be customized to complement any home.



### Grille Profiles

Grilles are available in various profiles and dimensions and are color-matched to the window's interior and exterior color. Easy-care grilles are located between the panes of glass and never require dusting or cleaning.







SCAN TO FIND  
YOUR PERFECT  
WINDOW & DOOR



Simonton 5500 Collection Customer Rating: 4.7/5 Stars  
(as of 11/18/22)

Go to [Simonton.com/5500](https://www.simonton.com/5500) to learn more about Simonton 5500 windows and read independent homeowner reviews.



Part of the **Cornerstone Building Brands** family,  
the #1 manufacturer of windows in North America.

 Made in USA

The information contained is current at the time of printing. Changes to the product(s) may have been made since publication. Not all product styles and options are available in all areas. Please consult your sales representative prior to purchasing. Due to limitations in the printing process, actual colors may vary from printed materials. Please see a sample of the product before making your final color selection.

Simonton® is registered trademark, and Impressive Inside & Out™, the Simonton logo and the stylized "S" are trademarks of Simonton Windows & Doors, Inc. ENERGY STAR® is a registered trademark of the U.S. Environmental Protection Agency.

**SIMONTON.COM**



5020 Weston Parkway, Cary NC 27513 | 1-800-SIMONTON (1-800-746-6686)

Impressive Inside & Out™