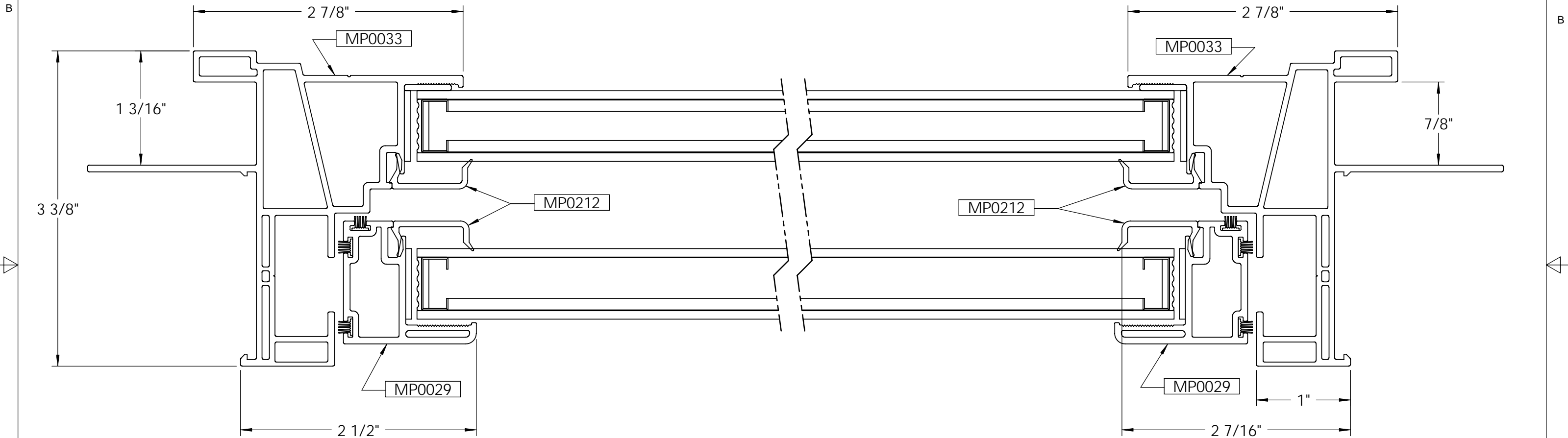

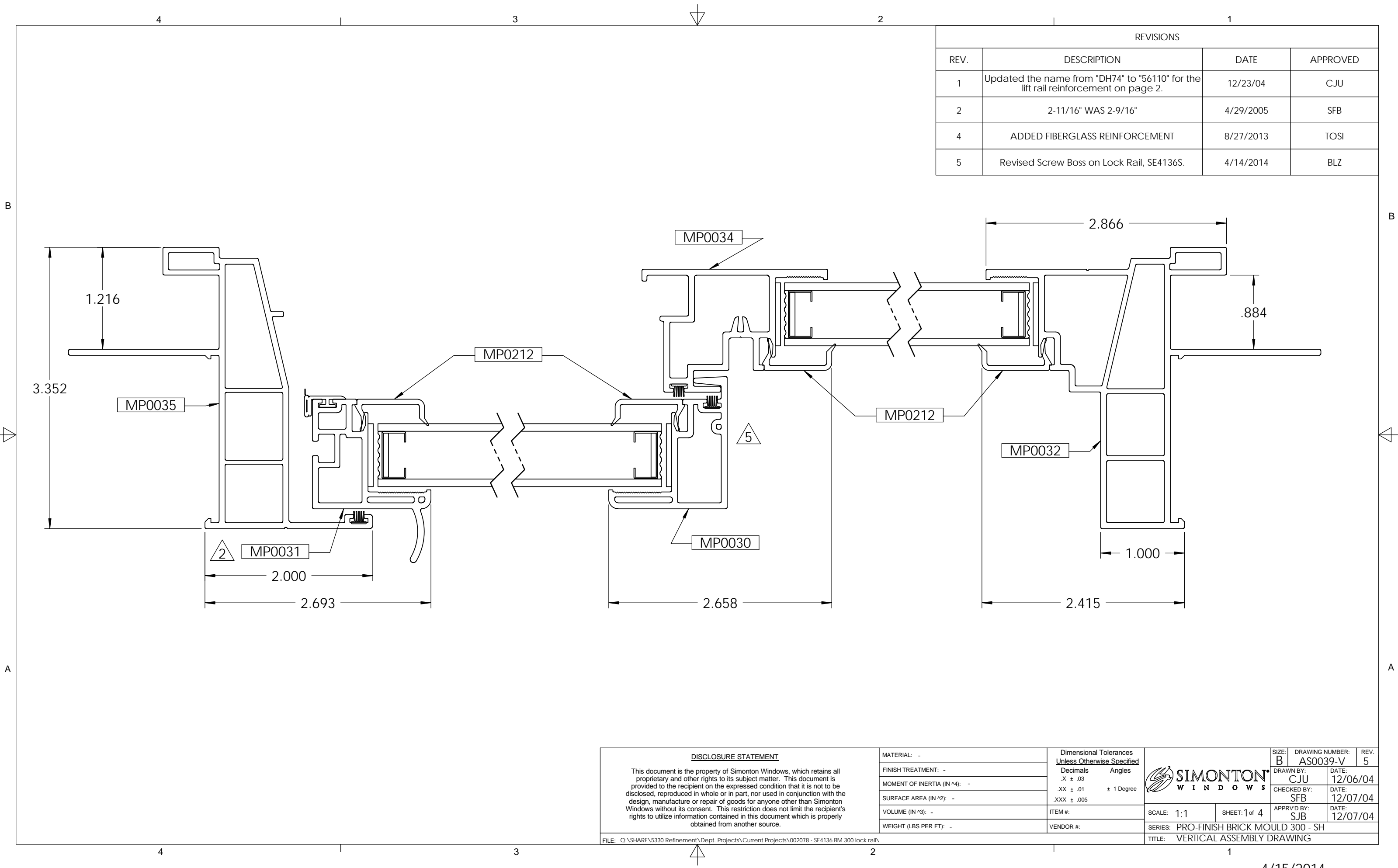


REVISIONS			
REV.	DESCRIPTION	DATE	BY
1	REPLACED GLAZING BEAD MP0020 WITH MP0212	9/3/2009	T.D.D.




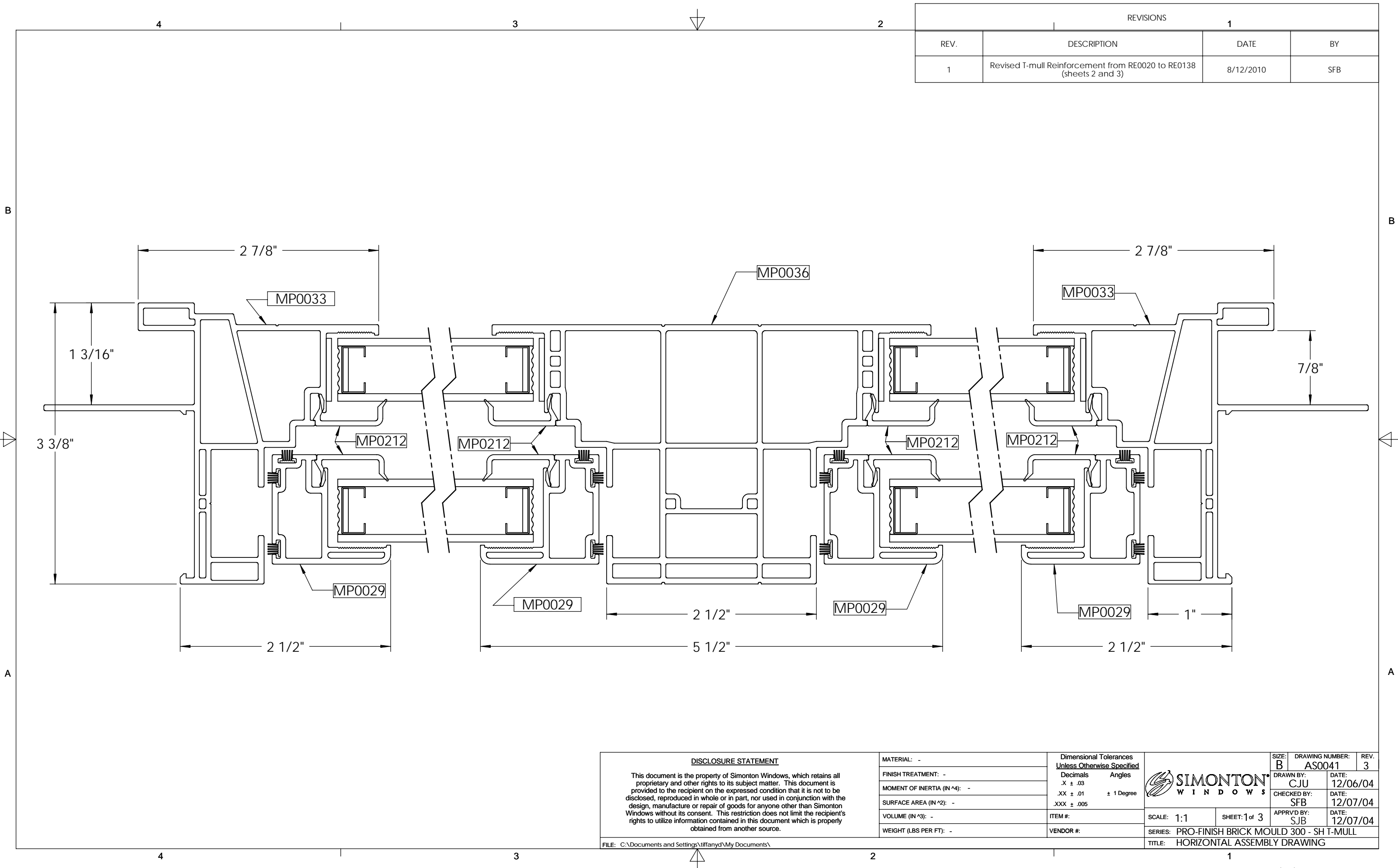
<div>DISCLOSURE STATEMENT</div> <p>This document is the property of Simonton Windows, which retains all proprietary and other rights to its subject matter. This document is provided to the recipient on the expressed condition that it is not to be disclosed, reproduced in whole or in part, nor used in conjunction with the design, manufacture or repair of goods for anyone other than Simonton Windows without its consent. This restriction does not limit the recipient's rights to utilize information contained in this document which is properly obtained from another source.</p>	MATERIAL: -	Dimensional Tolerances Unless Otherwise Specified			SIZE: B	DRAWING NUMBER: AS0039-H	REV. 1	
	FINISH TREATMENT: -	Decimals .X ± .03	Angles ± 1 Degree		DRAWN BY: CJU	DATE: 12/03/04		
	MOMENT OF INERTIA (IN ^4): -	.XX ± .01	± 1 Degree		CHECKED BY: SFB	DATE: 12/07/04		
	SURFACE AREA (IN ^2): -	.XXX ± .005						
	VOLUME (IN ^3): -	ITEM #:			SCALE: 1:1	SHEET: 1 of 3	APPR'D BY: SJB	DATE: 12/07/04
	WEIGHT (LBS PER FT): -	VENDOR #:			SERIES: PRO-FINISH BRICK MOULD 300 - SH			
FILE: C:\Documents and Settings\tiffanyd\My Documents\				TITLE: HORIZONTAL ASSEMBLY DRAWING				

9/3/2009



REVISIONS			
REV.	DESCRIPTION	DATE	APPROVED
1	Updated the name from "DH74" to "56110" for the lift rail reinforcement on page 2.	12/23/04	CJU
2	2-11/16" WAS 2-9/16"	4/29/2005	SFB
4	ADDED FIBERGLASS REINFORCEMENT	8/27/2013	TOSI
5	Revised Screw Boss on Lock Rail, SE4136S.	4/14/2014	BLZ

<div>DISCLOSURE STATEMENT</div> <p>This document is the property of Simonton Windows, which retains all proprietary and other rights to its subject matter. This document is provided to the recipient on the expressed condition that it is not to be disclosed, reproduced in whole or in part, nor used in conjunction with the design, manufacture or repair of goods for anyone other than Simonton Windows without its consent. This restriction does not limit the recipient's rights to utilize information contained in this document which is properly obtained from another source.</p>	MATERIAL: -	Dimensional Tolerances Unless Otherwise Specified			SIZE: B	DRAWING NUMBER: AS0039-V	REV. 5
	FINISH TREATMENT: -	Decimals .X ± .03	Angles ± 1 Degree		DRAWN BY: CJU	DATE: 12/06/04	
	MOMENT OF INERTIA (IN ^4): -	.XX ± .01			CHECKED BY: SFB	DATE: 12/07/04	
	SURFACE AREA (IN ^2): -	.XXX ± .005			APPR'D BY: SJB	DATE: 12/07/04	
	VOLUME (IN ^3): -	ITEM #:			SCALE: 1:1	SHEET: 1 of 4	
	WEIGHT (LBS PER FT): -	VENDOR #:			SERIES: PRO-FINISH BRICK MOULD 300 - SH		
FILE: Q:\SHARE\5330 Refinement\Dept. Projects\Current Projects\002078 - SE4136 BM 300 lock rail\					TITLE: VERTICAL ASSEMBLY DRAWING		



REVISIONS			
REV.	DESCRIPTION	DATE	BY
1	Revised T-mull Reinforcement from RE0020 to RE0138 (sheets 2 and 3)	8/12/2010	SFB

<div>DISCLOSURE STATEMENT</div> <div>This document is the property of Simonton Windows, which retains all proprietary and other rights to its subject matter. This document is provided to the recipient on the expressed condition that it is not to be disclosed, reproduced in whole or in part, nor used in conjunction with the design, manufacture or repair of goods for anyone other than Simonton Windows without its consent. This restriction does not limit the recipient's rights to utilize information contained in this document which is properly obtained from another source.</div> <div>FILE: C:\Documents and Settings\Tiffanyd\My Documents\</div>	MATERIAL: -	Dimensional Tolerances Unless Otherwise Specified		SIZE: B	DRAWING NUMBER: AS0041	REV. 3
	FINISH TREATMENT: -	Decimals	Angles	DRAWN BY: CJU		DATE: 12/06/04
	MOMENT OF INERTIA (IN ^4): -	.X ± .03		CHECKED BY: SFB		DATE: 12/07/04
	SURFACE AREA (IN ^2): -	.XX ± .01	± 1 Degree	APPRVD BY: SJB		DATE: 12/07/04
	VOLUME (IN ^3): -	.XXX ± .005		SERIES: PRO-FINISH BRICK MOULD 300 - SH T-MULL		
WEIGHT (LBS PER FT): -		ITEM #:	VENDOR #:	TITLE: HORIZONTAL ASSEMBLY DRAWING		
SCALE: 1:1		SHEET: 1 of 3				